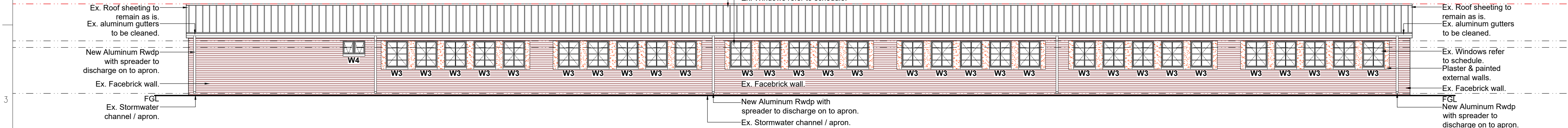
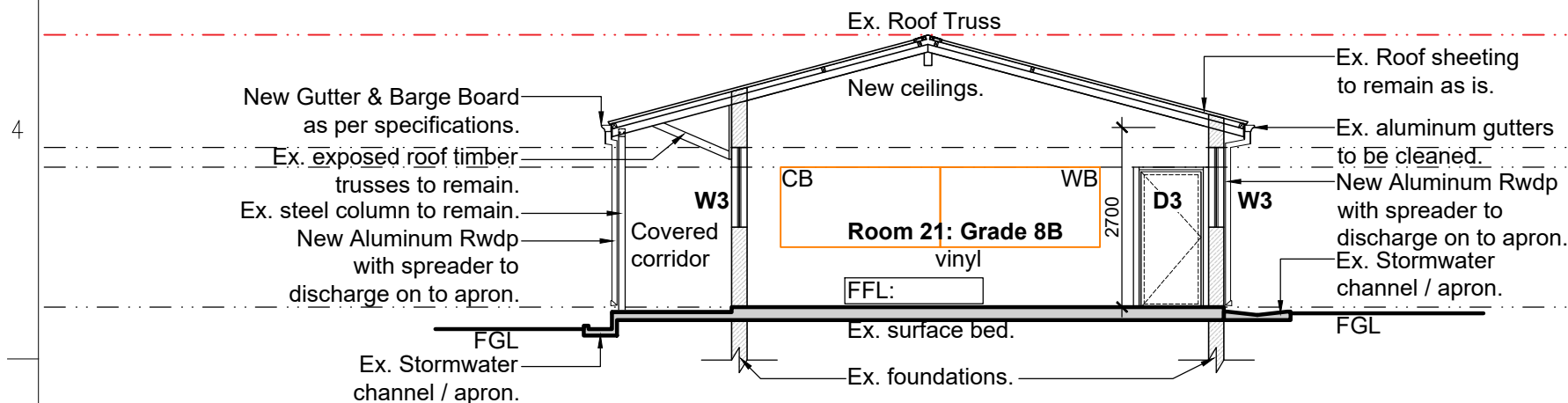


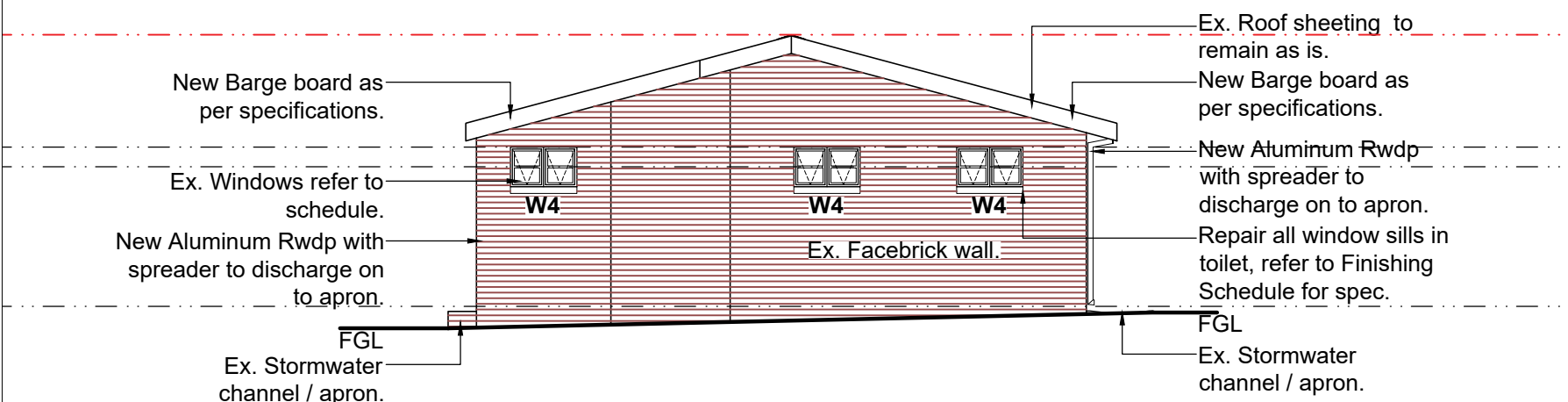
WEST ELEVATION - BLOCK - C
Umbelebele High School:
1:100



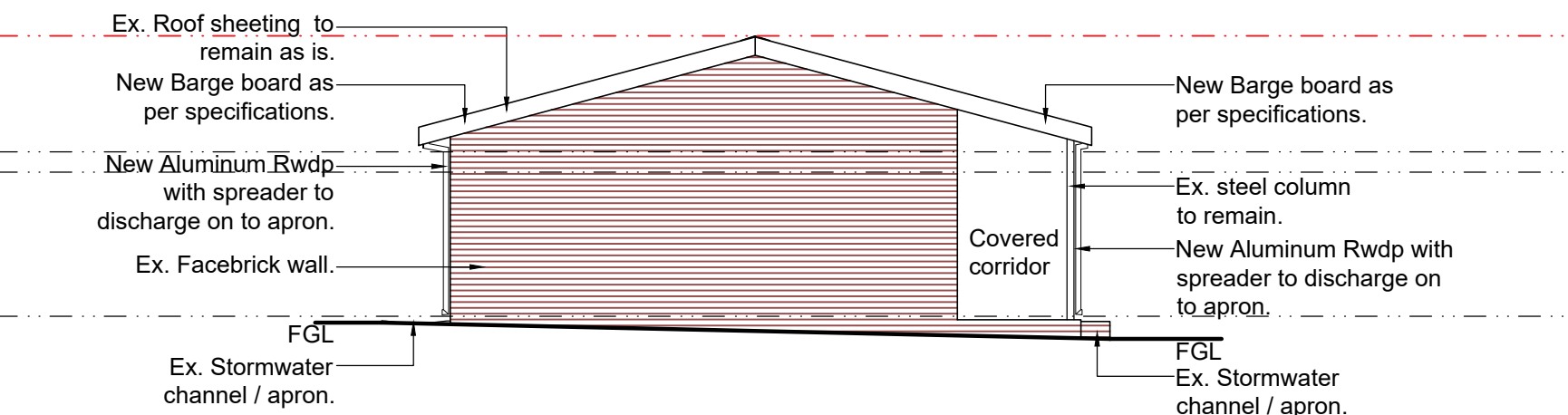
EAST ELEVATION - BLOCK - C
Umbelebele High School:
1:100



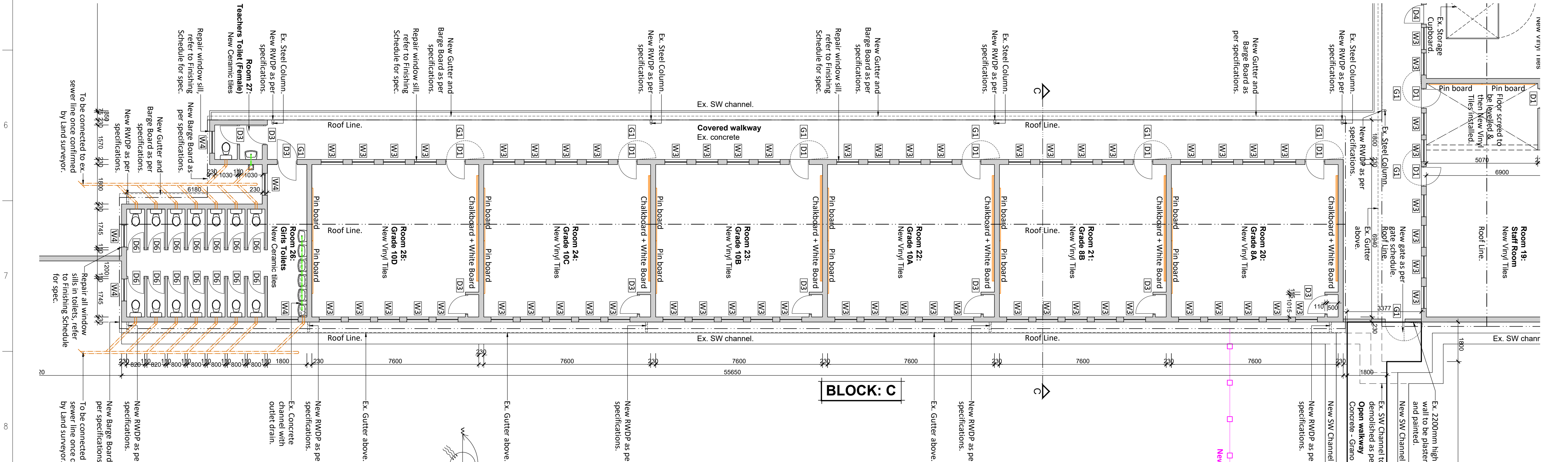
SECTION C-C - BLOCK - C
Umbelebele High School:
1:100



SOUTH ELEVATION - BLOCK - C
Umbelebele High School:
1:100



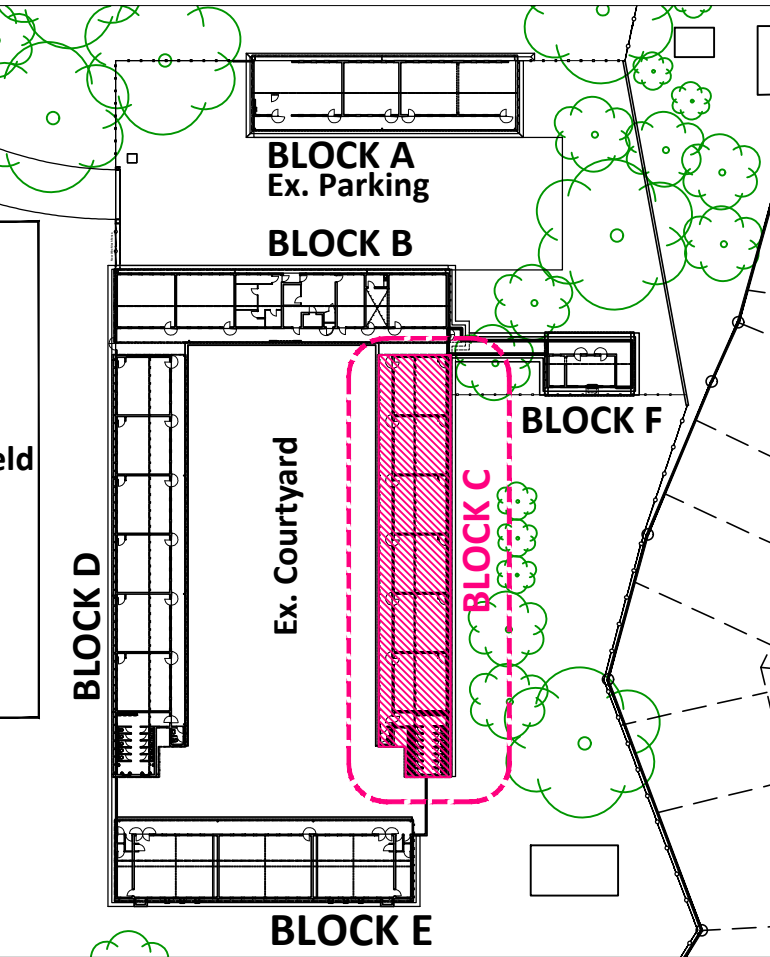
NORTH ELEVATION - BLOCK - C
Umbelebele High School:
1:100



GROUND STOREY LAYOUT - BLOCK - C
Umbelebele High School:
1:100

Please Note:

- For General Notes please refer to **Drawing Number - 14-04**.
- All measurements are for reference purposes only.



KEY PLAN - BLOCK - C
Umbelebele High School:
1:1000

REV	DATE	DESCRIPTION	NAME
A	19/11/27	Issued to QS for BOQ.	T. Nadasen

PROJECT MANAGERS




2 LATINA PLACE
WESTVILLE, 3629
P.O. BOX 1788
WESTVILLE 3630
TEL 031 -266 8345/65
FAX 031 -266 8336

IMPLEMENTING AGENT



Development Bank
of Southern Africa

CLIENT



education
Department:
Education
PROVINCE OF KWAZULU-NATAL

EMIS No. **500286898**

COORDINATES: **29°58'35.86"S 30°53'51.28"E**

SCHOOL NAME: **UMBELEBELE HIGH SCHOOL**

PROPERTY DESCRIPTION: **Mango Circle, Umlazi, Durban, 4031**

PROJECT: **STORM DAMAGES (PHASE 17)**

DISCIPLINE: **ARCHITECTURE**

DRAWING TITLE: **BLOCK C: FLOOR PLAN, SECTIONS & ELEVATIONS**

PROPOSED PRIMARY SCOPE

	RESPONSIBLE PERSON	DATE	SIGN	SHEET SIZE
DESIGNED	-	-	-	A1
DRAWN	-	-	-	SCALE AS SHOWN
CHECKED	-	-	-	SHEET
APPROVED				
DRAWING STATUS CODES : R = REPORT P = PRELIMINARY T = TENDER A = AS BUILT C = CONSTRUCTION S = SUBMISSION				
DRAWING INFORMATION	MCI PROJECT DRG No.			
DISCIPLINE	PROJ. No	DWG No	STATUS	REV
ARCHITECTURE	117	14-06	T	A